

Continuing Studies Building Addition

Development Variance Permit to vary Height and
Parking

January 22, 2014
Advisory Design Panel



University
of Victoria

Neil Connelly
David Perry
Carl-Jan Rupp

UVic Director of Campus Planning and Sustainability
UVic Director of Capital Development
Hughes Condon Marler Architects

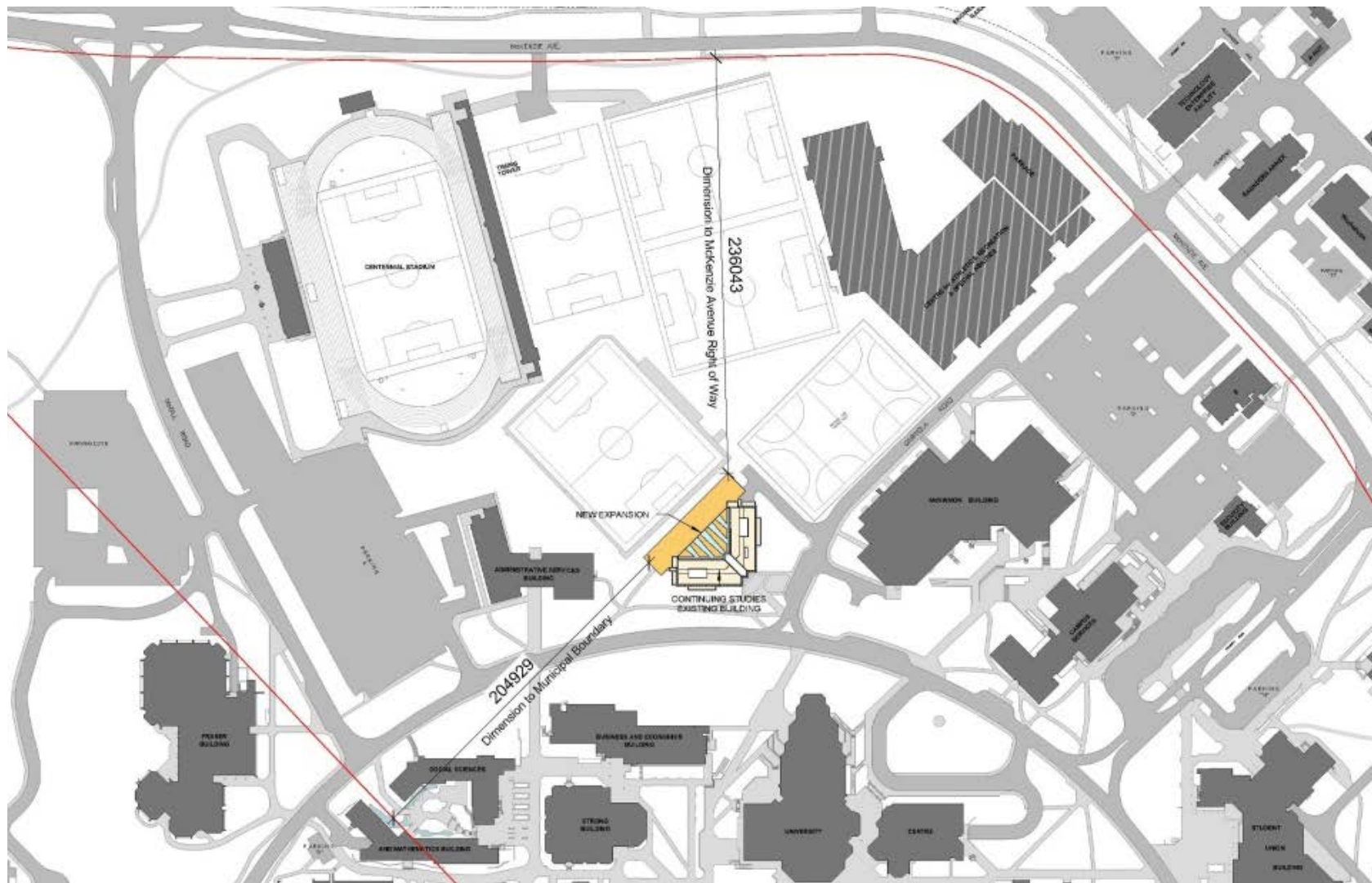
Continuing Studies Building

- Completed in 2003
- Building has a lower level and 3 levels above grade
- Development Variance Permit in 2002 approved a 14.8m building height



DVP application for the Addition – 63 parking spaces and 14.8m height





Continuing Studies Building Addition Features

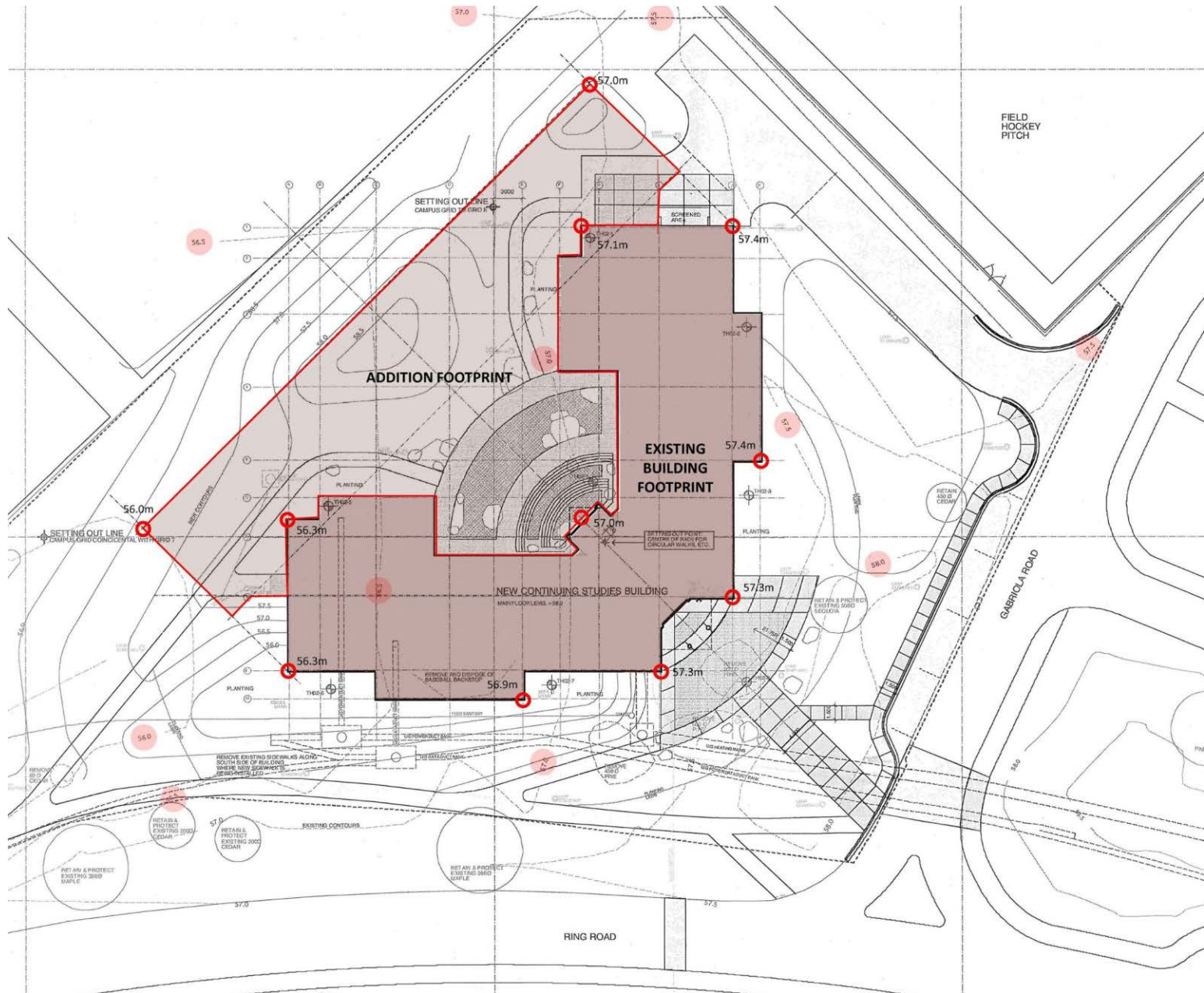
- Provides for Continuing Studies program expansion needs and Includes renovations to the existing building
- Accommodates the English Language Centre - Pathways Program
- Adds thirteen new classrooms, computer language labs, four offices and student and instructor support space
- Includes public space for collaboration and interaction as well as flexible space



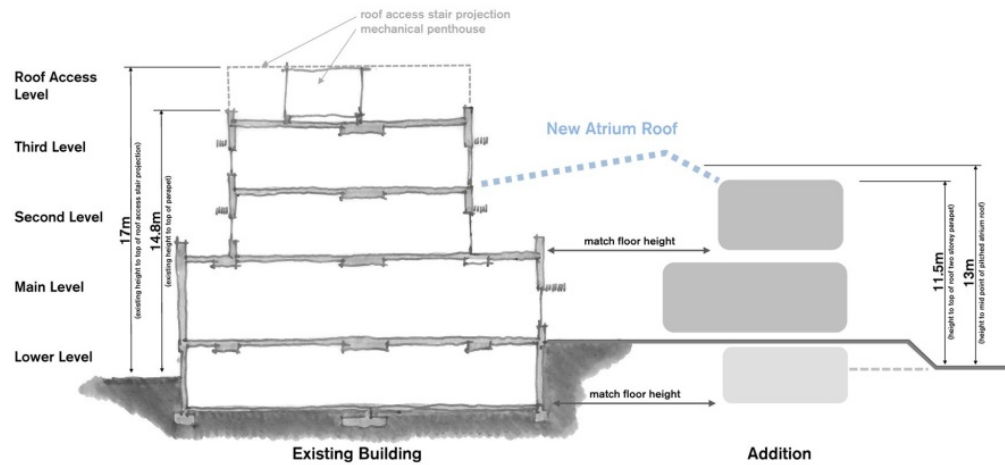
Continuing Studies Building Addition Data and Design

- Addition Gross Area 3130.3m²
- Design allows for the integration of the new uses with the existing building configuration.
- Lower level with two levels above grade
- Addition Height 13m (42.7ft²) +/-
- Enclosed atrium
- Size, massing and exterior treatment to complement the existing building



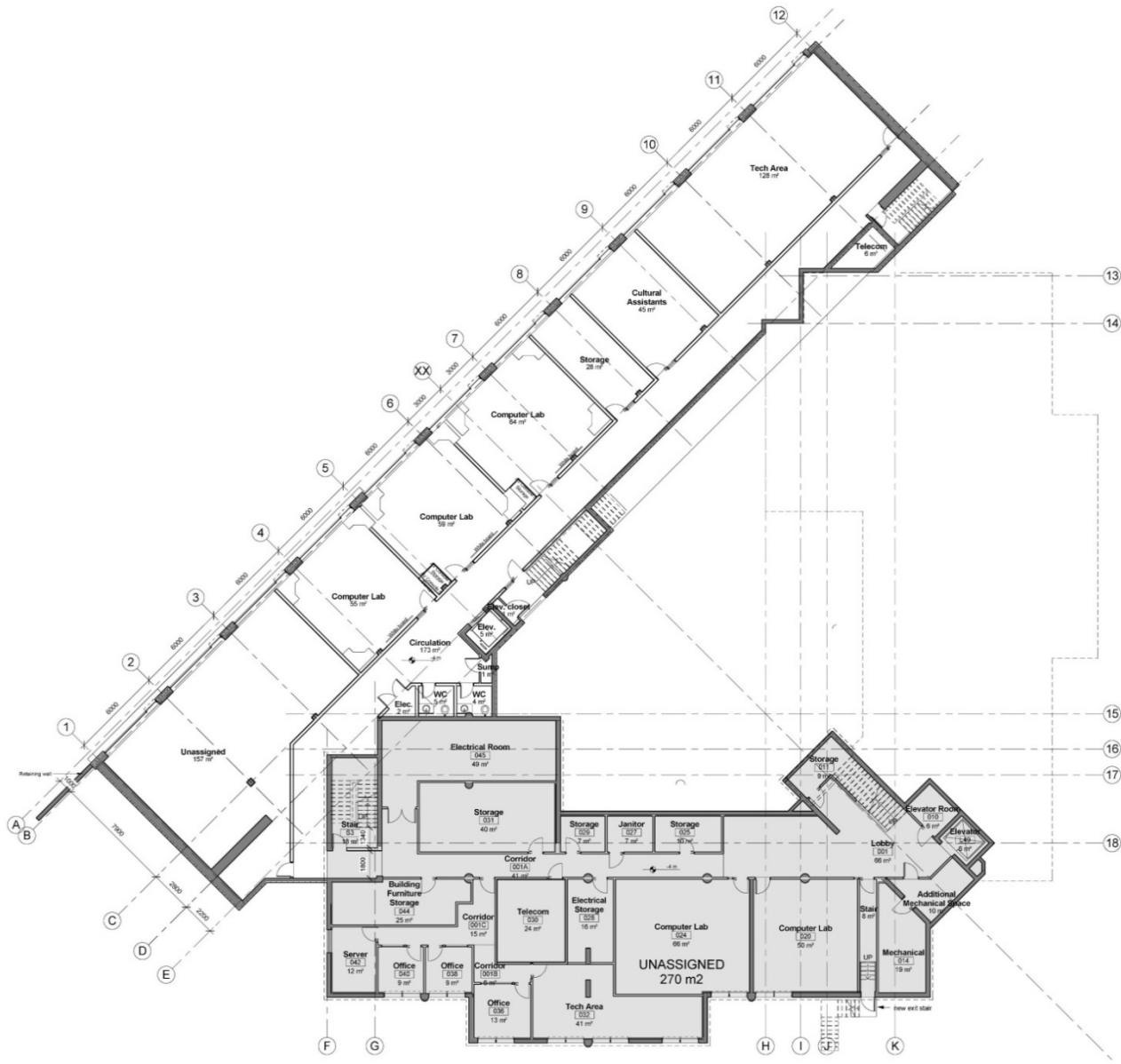


Schematic Section

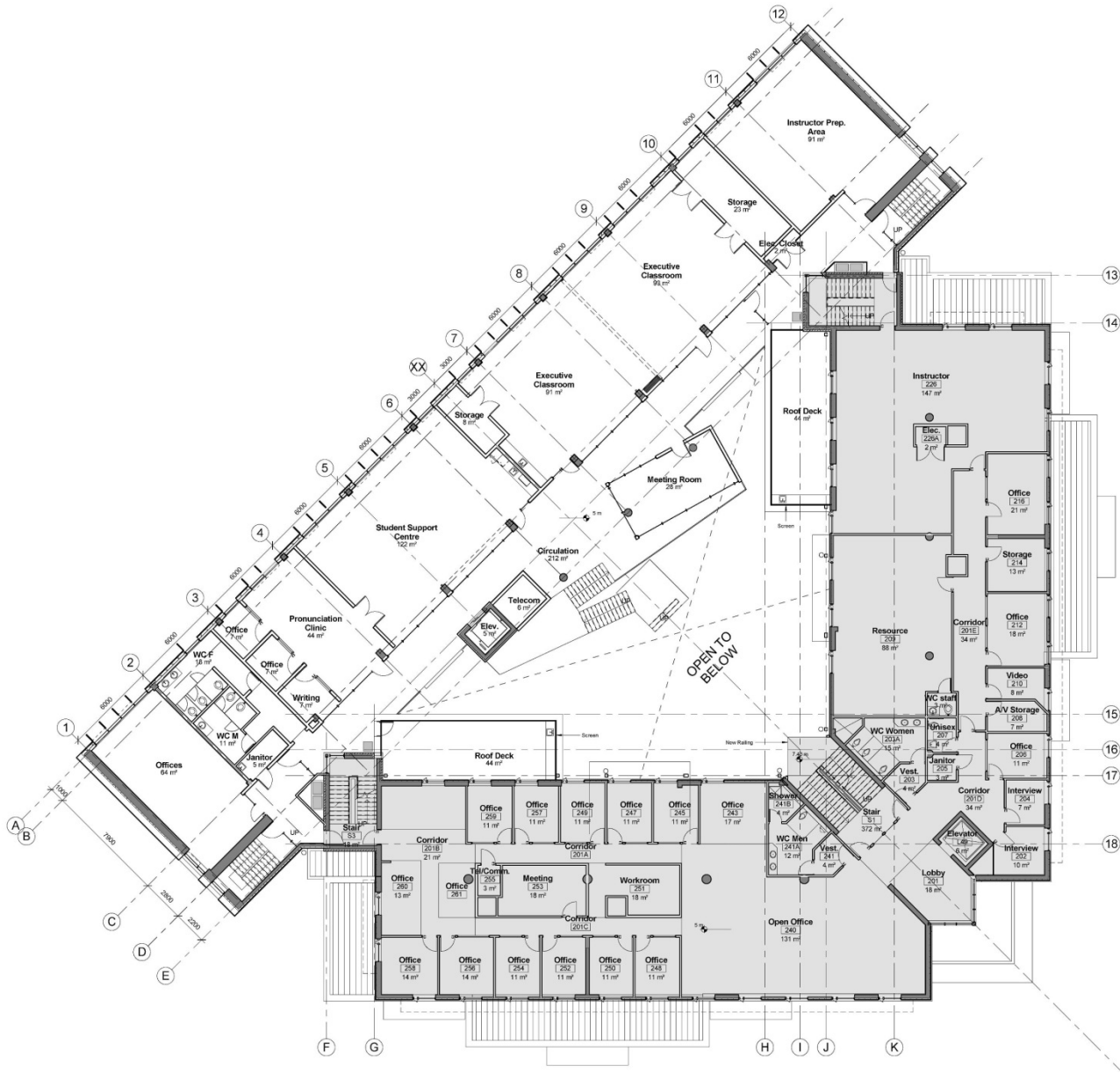


Two Storey Above Grade with Lower Level - Atrium & Floor Level Adjacencies













3 North West Elevation
1:100



University
of Victoria

Building Elevation



1 North East Elevation
1 : 100

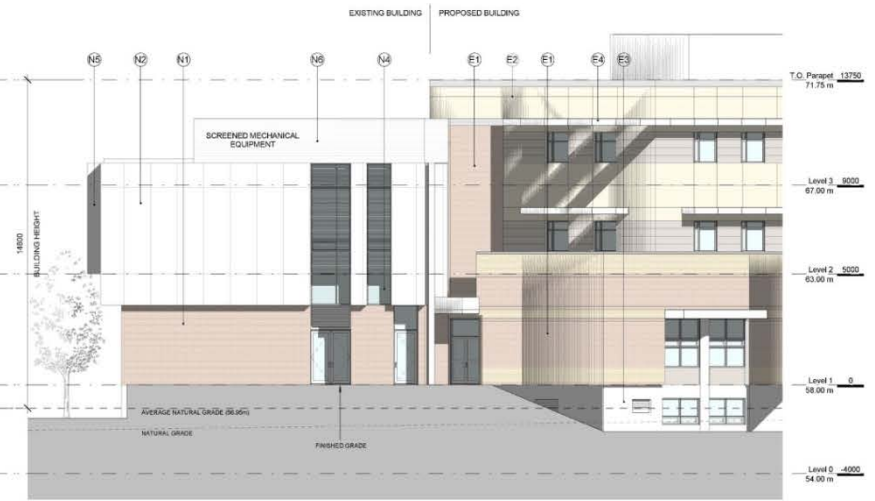


University of Victoria

Building Elevation



1 North East Elevation
1:100



2 South West Elevation
1:100



Continuing Studies Building Addition Project Schedule

- Development Variance Permit approval
- Design completion and tender
- Construction targeted to commence July 2014
- Occupancy targeted August 2015

